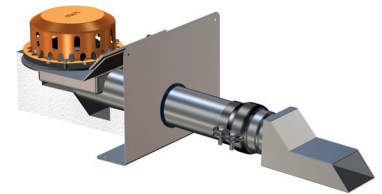
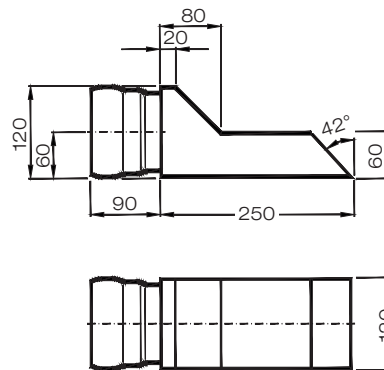
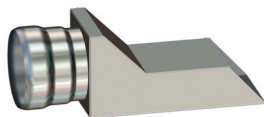


LORO-X Rechteck-Notablaufspeier

DN 100

LX1881-20X

Serie 79 (RB)
Rechteck-Notablaufspeier
 Art.-Nr. 15196.100X
 Gewicht: 1,1 kg



Serie 79 (RB)
 Ablauf Art.-Nr. 01371.100X
 Gewicht: 6,9 kg

mit Klemmflansch 45°
 für Bitumen-Abdichtungsbahnen

